

## PP-4-FOS & PP-5-FOS Multi-Cartridge Housing



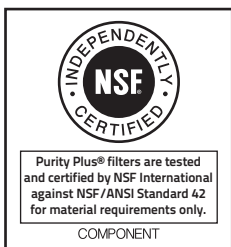
Adjustable top plate accepts variable length of cartridges

We manufacture a complete line of four and five round models to accommodate a wide range of flow rates. Options include 304L or 316L stainless steel; band clamp or swing bolt closure. Design pressure 150psi (10bar) @ 300°F (149°C). Standard inlet and outlet connections are 2" MNPT with many other options available. Standard finish is poly-coat over stainless and other options can be special ordered. Standard gasket is FDA grade Buna-N.



### Features

- Designed for industrial and commercial filtration needs;
- Heavy-duty stainless steel construction for durability;
- 304L standard and 316L stainless steel available;
- Band clamp and swing-bolt closure for quick cartridge change outs;
- Pipe fitting readily accessible for easy installation;
- Knife-edge seal at both cartridge ends to eliminate by-pass;
- Standard housing accept double-open-end cartridges;
- Available with 222 or 226 cartridge adapters;
- Complete selection of pipe fittings: flanged, sanitary, BSP, grooved and others;
- See ordering guide for complete selection of options to fit your application.

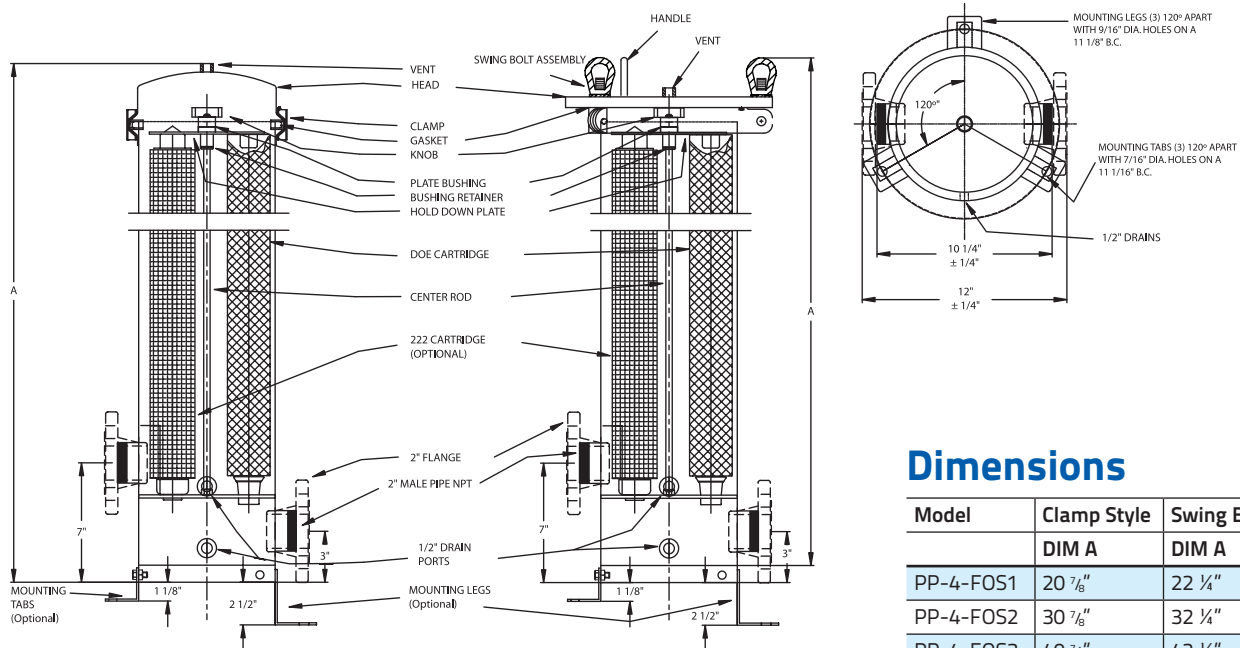


# Standard Design Specifications

Model	Qty.(Length) of cartridges <sup>(1)</sup>	Flow rate GPM <sup>(2)</sup>	Pipe size	Drains	Vent	Max Ctg Diameter	Shipping Wgt. Clamp	Box Size Clamp	Shipping Wgt. Swing Bolt	Box Size Swing Bolt
PP-4-FOS1	4(10")	28	2"MNPT	½" NPT	¼" NPT	2¾" DD	25 lbs	12x12x23	62 lbs	18x18x27
PP-4-FOS2	4(20")	56	2"MNPT	½" NPT	¼" NPT	2¾" DD	31 lbs	12x12x33	68 lbs	18x18x37
PP-4-FOS3	4(30")	84	2"MNPT	½" NPT	¼" NPT	2¾" DD	38 lbs	12x12x43	74 lbs	18x18x47
PP-4-FOS4	4(40")	112	2"MNPT	½" NPT	¼" NPT	2¾" DD	45 lbs	12x12x53	80 lbs	18x18x57
PP-5-FOS1	5(10")	35	2"MNPT	½" NPT	¼" NPT	2¾" DD	26 lbs	12x12x23	64 lbs	18x18x27
PP-5-FOS2	5(20")	70	2"MNPT	½" NPT	¼" NPT	2¾" DD	32 lbs	12x12x33	70 lbs	18x18x37
PP-5-FOS3	5(30")	105	2"MNPT	½" NPT	¼" NPT	2¾" DD	39 lbs	12x12x43	76 lbs	18x18x47
PP-5-FOS4	4(40")	140	2"MNPT	½" NPT	¼" NPT	2¾" DD	46 lbs	12x12x53	82 lbs	18x18x57

(1) Housing will accept: 10" = (9 ¾" or 10") 20" = (19 ½" or 20") 30" = (29 ¼" or 30") 40" = (39" or 40") lengths

(2) Based on 7gpm per 10" length with a 25 micro wound cartridge at 2PSID clean and viscosity of 1 cps. Flow rates are for guidelines only. Actual flow rates based on fluid, viscosity cartridge type, micro ratings and other factors.



## Dimensions

Model	Clamp Style	Swing Bolt Style
	DIM A	DIM A
PP-4-FOS1	20 7/8"	22 ¼"
PP-4-FOS2	30 7/8"	32 ¼"
PP-4-FOS3	40 7/8"	42 ¼"
PP-4-FOS4	50 7/8"	52 ¼"
PP-5-FOS1	20 7/8"	22 ¼"
PP-5-FOS2	30 7/8"	32 ¼"
PP-5-FOS3	40 7/8"	42 ¼"
PP-5-FOS4	50 7/8"	52 ¼"



Mounting Tabs (May be installed at site)

Sanitary Fittings

Gauge Ports Assembly with mounting Legs

Electro Polish

## Ordering Guide

4	PP-x-FOS	2	SB	316	222	2TC	EP	ML	E
No of Columns	Product Code	No. of Stacks	Closure Style	Material	Cartridge Configuration	Connection Type	Finish	Options	Gasket
4 5	PP-x-FOS	1 = 1 High 2 = 2 High 3 = 3 High 4 = 4 High	Blank = V-Band Clamp SB = Swing Bolt	Blank = 304L 316 = 316L	Blank = Double Open Ended 222 = 222 Style Cartridge Fin or Flat 226 = 226 Style Cartridge Fin or Flat	Blank = 1.5 MNTP = 1 ½" MNTP BSP = 2" BSP-NIPPLE 1F = 1" Flange 1.5F = 1 ½" Flange 2F = 2" Flange 1TC = 1" Ferrules 1.5TC = 1 ½" Ferrules 2TC = 2" Ferrules 2.5TC = 2 ½" Ferrules GF 1.5 = 1 ½" Grooved Fittings GF 2 = 2" Grooved Fittings 2FMPT = 2" Coupling	Blank = Standard Poly Coat EP = Electro Polished GB = Glass Bead P = Passive	Blank = None ML = Legs TABS = Tabs OL = Heavy Duty Legs GP = Gauge Ports GPA = Gauge Ports with gauges UP = Universal Parts	Blank = Buna E = EPR S = Silicon V = Viton TS = Teflon Encapsulated Silicon

